



**Avroy Shlain**<sup>®</sup>  
TRUE BEAUTY SHINES

## Best way to start your day

Add something extra-special to your skincare routine, give yourself a facial massage with Avroy Shlain's Jade Facial Roller after applying your favorite face cream, serum or mask.

This smooth white stone roller works to help your skin soak up those precious nourishing oils.

What does it do?

- Improves skin tone
- Tightens and depuffs skin
- Promotes skin elasticity
- Reduces dark under-eye circles
- Tightens pores

**Tip:** You can also boost the de-puffing power of a jade roller by putting it in the fridge or freezer before using to get it nice and cool, since coolness also helps reduce swelling.

Jade roller is relatively cool to the touch. This cooling helps with brightening your complexion reducing puffiness, stimulating lymphatic drainage, and promoting blood circulation.

Code: 86911

©Avroy Shlain Cosmetics 2023. All rights reserved.

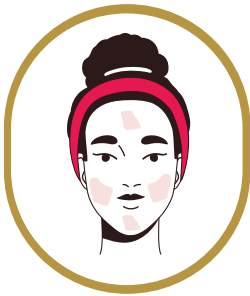




# Avroy Shlain®

TRUE BEAUTY SHINES

## How to use it?



STEP 1: Apply your face cream, serum or mask directly to your skin. Use the jade roller to help penetrate the skin.



STEP 2: For cheeks and jawline, start at the chin, rolling up and out towards the cheeks.



STEP 3: On forehead, start at the middle, rolling out toward the right and left



STEP 4: Start at the base of the neck, rolling upwards towards the chin.



STEP 5: Repeat every motion 3 times. Work in one direction

